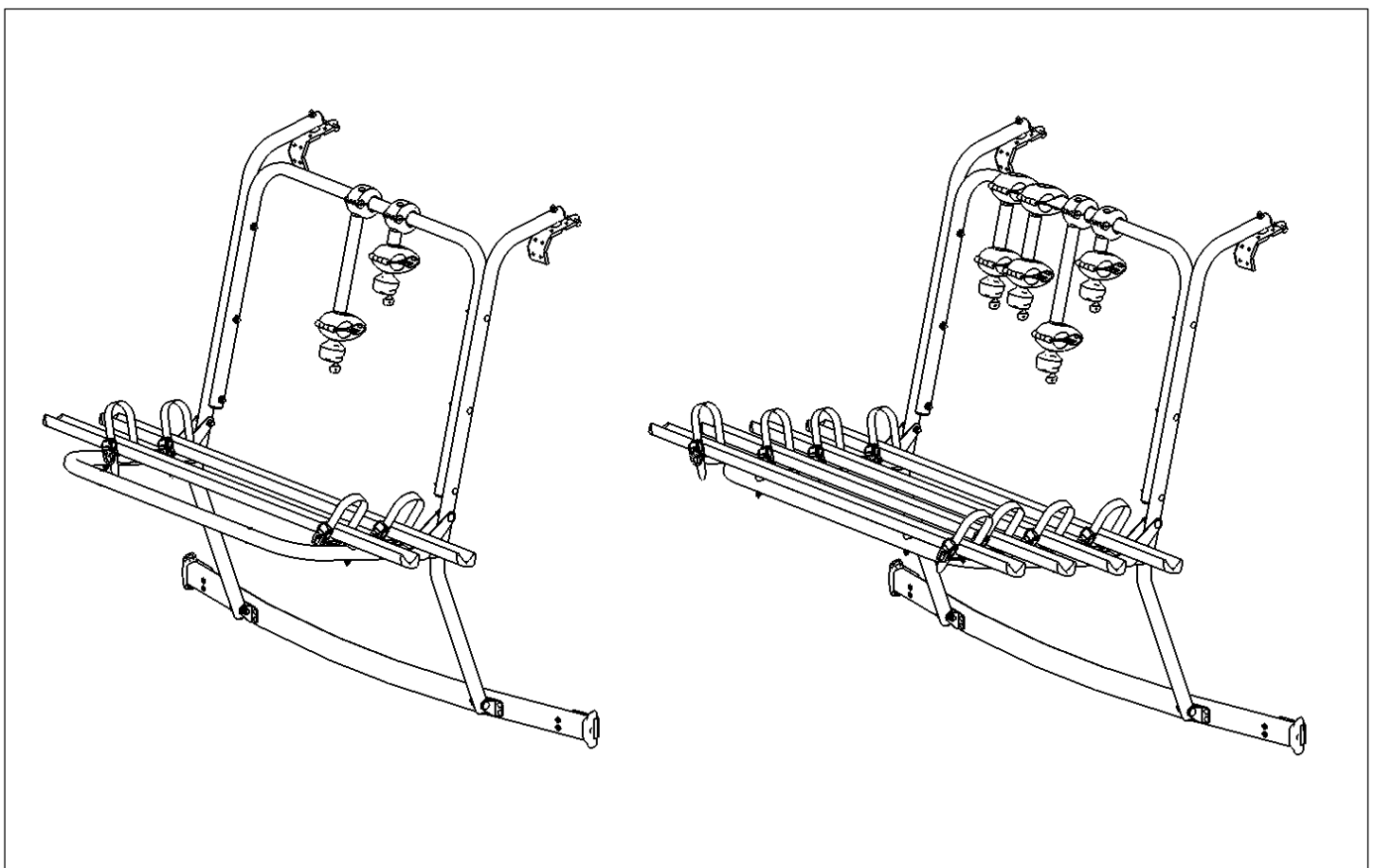


Tailgate bike rack for Volkswagen T6

Mounting and operating instructions

for 2 bikes, Order No. 30360
for 4 bikes, Order No. 30364

These mounting and operating instructions apply to all Volkswagen T6 models with tailgate.
Vehicles with rear doors and/or rear spoilers are excluded.



Uebler GmbH
Daimlerstraße 22
D-91301 Forchheim

Tel.: +49 (0)9191 7362-0
Fax: +49 (0)9191 7362-77
E-Mail: info@uebler.com
Internet: www.uebler.com

Dated: 10/2016

Dear Customer,

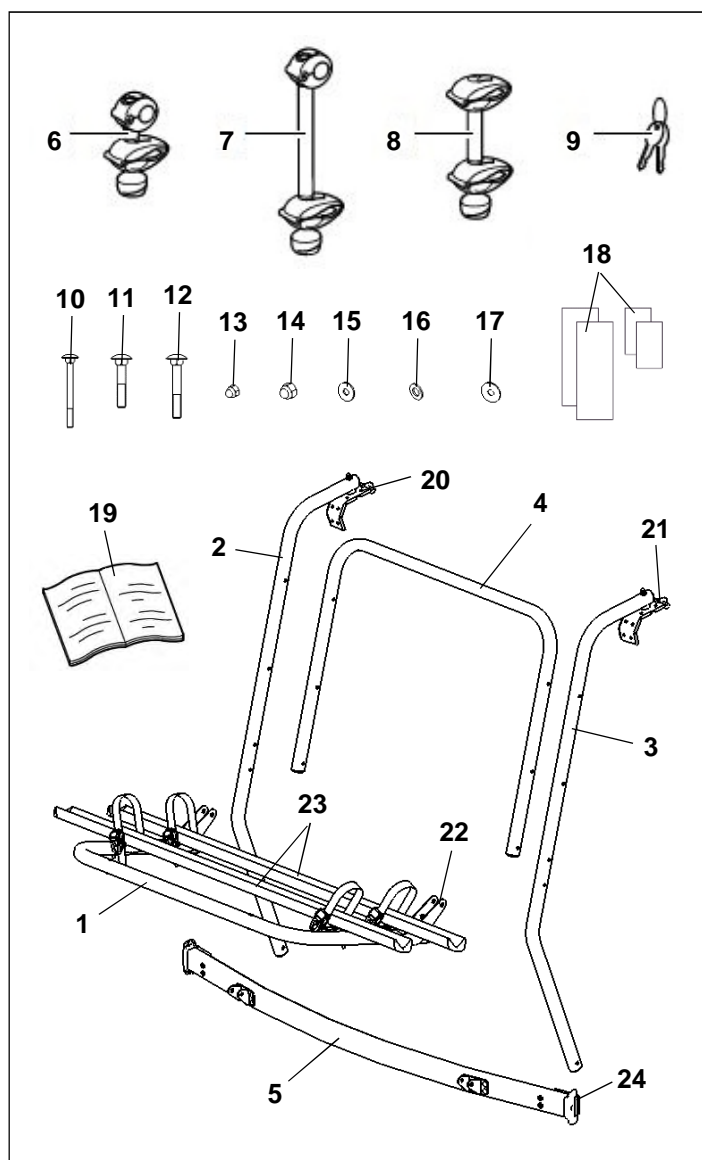
Thank you for choosing an Uebler bike rack.

The work and safety instructions in these mounting and operating instructions must be complied with at all times. Damage caused by failure to comply is excluded from any liability.

Note

The mounting and operation of the bike rack 30360 is described and illustrated. Use the same procedure accordingly for bike rack 30364. Always get a second person to help you to mount and demount the tailgate bike rack and the bikes.

Parts overview



Part number

Tailgate bike rack for 2 bikes
Order No. 30360
Tailgate bike rack for 4 bikes
Order No. 30364

Scope of supply

Name	Quantity	
	Order No. 30360	Order No. 30364
1 Hinged rack shelf	1	1
2 Rack side rail, left	1	1
3 Rack side rail, right	1	1
4 Rack frame	1	1
5 Cross-rail	1	1
6 Holder for 1st bike	1	1
7 Holder for 2nd bike	1	1
8 Holder for 3rd and 4th bike	-	2
9 Key for holder	4	8
10 Coach bolt M6x65	6	6
11 Coach bolt M8x45	2	2
12 Coach bolt M8x50	2	2
13 Cap nut M6	6	6
14 Cap nut M8	4	4
15 Washer Ø18 (steel)	4	4
16 Washer Ø16 (steel)	6	6
17 Washer Ø20 (plastic)	8	8
18 Set of masking films	1	1
19 Mounting and operating instructions	1	1

Note

We reserve the right to change the scope of supply. Get a qualified workshop to carry out repairs or replace parts. For safety reasons, Uebler recommends that you only use the original spare parts available from your specialist dealer.

Part designation	Quantity	
	Order No. 30360	Order No. 30364
20 Hook-in part left "L"	1	1
21 Hook-in part right "R"	1	1
22 Hinge	2	2
23 Bike rails	2	4
24 Clamping device	2	2

Technical data

	Order No. 30360	Order No. 30364
Self-weight	approx. 12 kg	approx. 16 kg
Maximum load capacity (loading weight) per wheel rail 1 and 2	30 kg each	30 kg each
Maximum load capacity (loading weight) per wheel rail 3 and 4	-	17.5 kg each
Total maximum loading weight	60 kg	70 kg
Maximum allowable centre-to-centre spacing of the bikes	122 cm	122 cm

Maximum tube diameter of the bike frame

Round tube	75 mm
Oval tube	75x45 mm

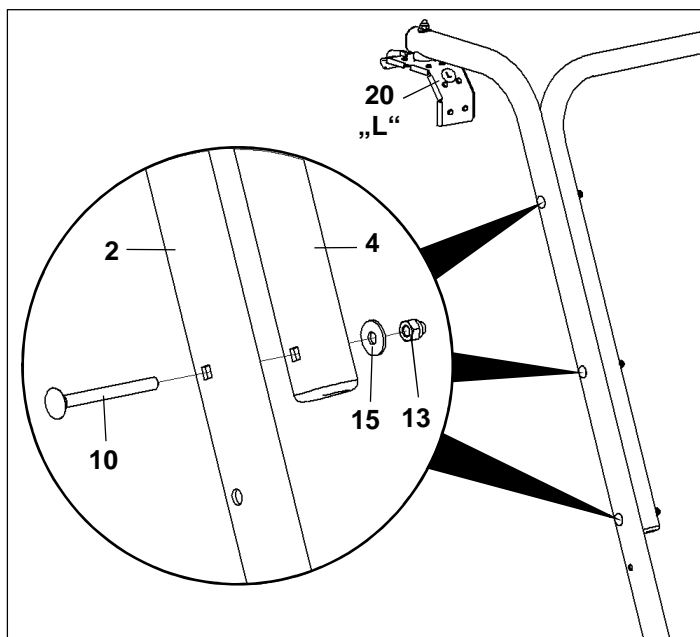
Tools needed

- Ring/open-end spanner SW10 and SW13

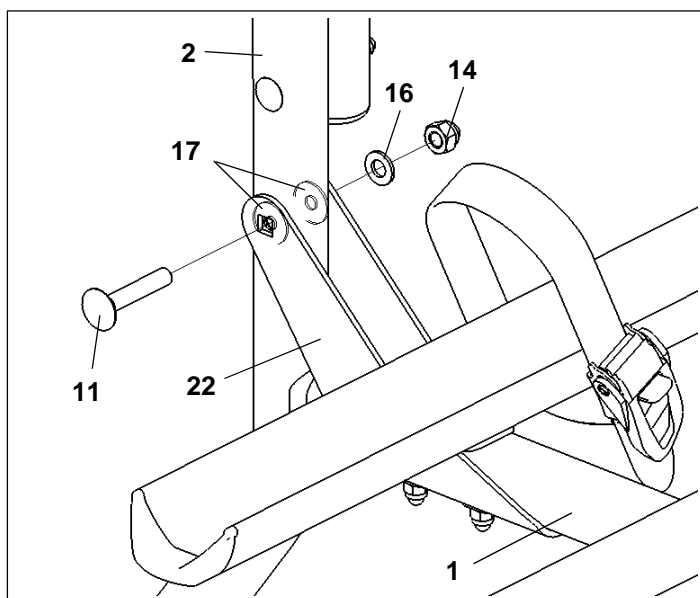
Mounting the bike rack

Note

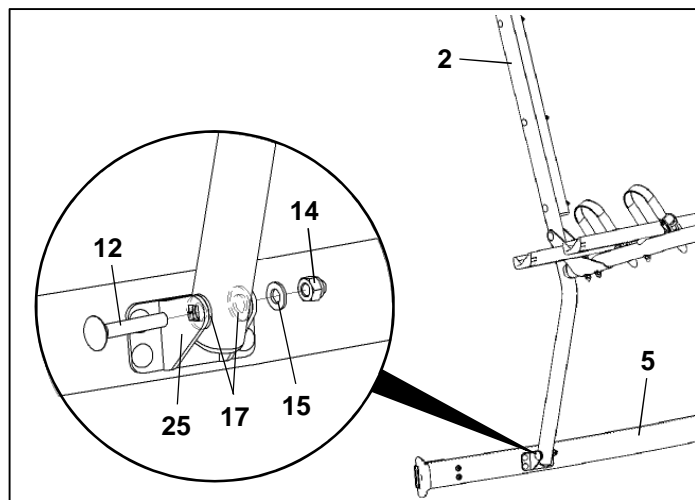
When installing the two rack side rails (2) and (3), ensure that the preassembled hook-in parts (20) and (21) are adapted to the vehicle contour. (marking right "R" / left "L")



1. Use coach bolt M6x65 (10), washer $\varnothing 18$ (15) and cap nut M6 (13) to bolt the rack side rail (2) onto the rack frame (4). Repeat accordingly to install rack side rail (3).



2. Bolt the hinged rack shelf (1) onto the rack side rail (2). Use coach bolt M8x45 (11), washer $\varnothing 16$ (16) and cap nut M8 (14). Ensure that plastic washers (17) are inserted **between** the hinge (22) and rack side rail (2) on both sides. Repeat accordingly to install rack side rail (3).



3. Use coach bolt M8x50 (12), washer $\varnothing 16$ (16) and cap nut M8 (14) to bolt the rack side rail (2) onto the cross-rail (5). Ensure that plastic washers (17) are inserted **between** the bolt bracket (25) and rack side rail (2) on both sides. Repeat accordingly to install rack side rail (3).

Mounting/demounting the tailgate bike rack on/from the vehicle

⚠ Caution

Before mounting the bike rack for the first time, check that the tailgate and hinges of your vehicle are in perfect condition. If you have any doubts about their strength, contact your car dealer or repair garage.

⚠ Caution

Do not open the tailgate if the tailgate rack is loaded. This especially applies to tailgates with electric opening. Disregard of this instruction can cause damage to the vehicle.

⚠ Caution

Note the changed vehicle dimensions (width, height, depth) in operation with the tailgate bike rack. Caution when reversing.

⚠ Caution

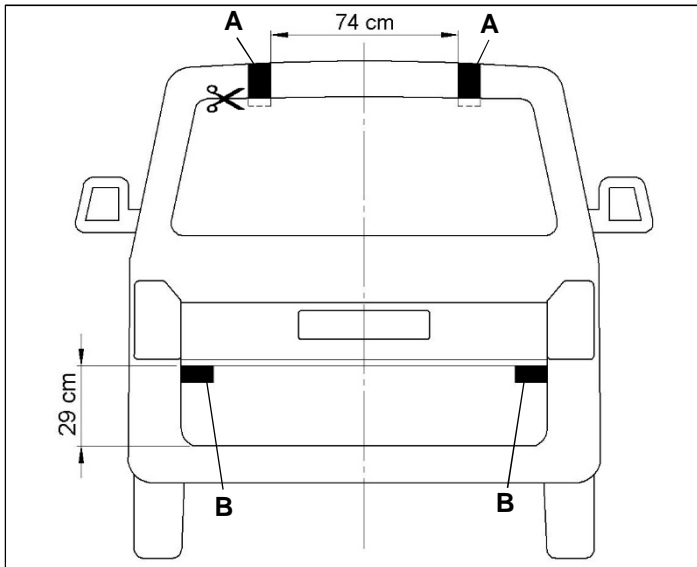
Attention, for vehicles with pop-up roof: The pop-up roof must only be actuated if the tailgate is closed. Disregard can cause damage to the vehicle and tailgate bike rack.

Mounting the tailgate bike rack on the vehicle

1. Clean the vehicle in the area of the tailgate.

Note

When attaching the masking films (18), position them so that they overhang by around 10 mm and stick on around the edge of the tailgate.

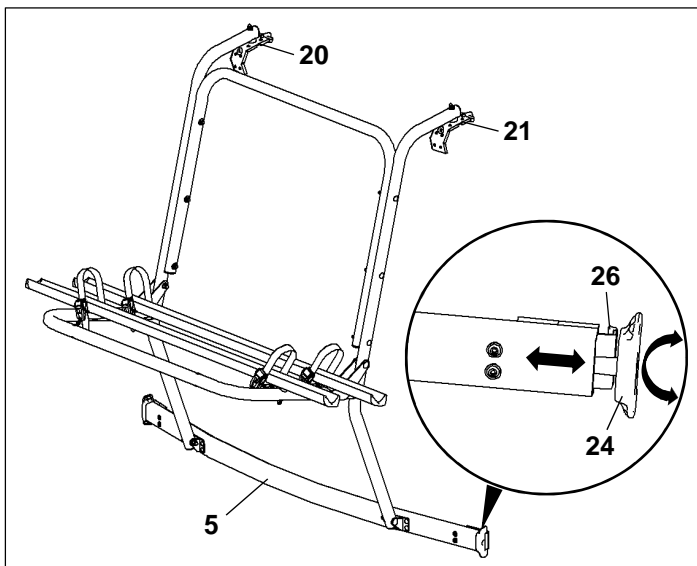


- A: Paint masking film 90 x 210 cm
B: Paint masking film 90 x 67.5 cm

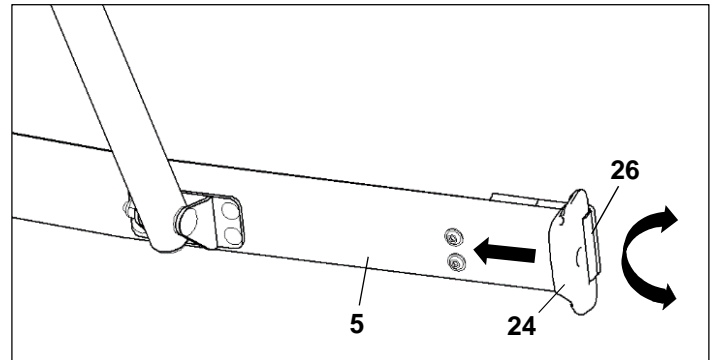
2. Attach masking films -A- and -B- as shown, symmetrically about the middle of the vehicle with the given dimensions.
If necessary, use scissors to shorten the masking films -A- to the level of the rear windscreen.

Caution

When mounting the rack, ensure that all rubber inserts are present on both hook-in parts (20) and (21) and on the cross-rail (5).



3. Pull out the clamping device (24) on both sides and unscrew anti-clockwise until it stops.
4. Align the rack with the middle of the vehicle and, with the tailgate closed, carefully hook the top hook-in parts (20) and (21) into the gap between the tailgate and vehicle roof. Swing the rack downwards carefully. Ensure that the masking films (18) are positioned correctly.
5. Open the tailgate slightly and tighten the clamps (26) with clamping device (24) clockwise and uniformly on both sides.



6. Align the clamping device (24) with the cross-rail (5) and press inwards until it touches with form fit.
7. Close the tailgate carefully.

Caution

If the tailgate rack is fitted the tailgate must not be slammed shut, it must be closed carefully. When closing, ensure there is a gap at the side between the clamps (26) and the vehicle.

Demounting the tailgate bike rack from the vehicle

The tailgate bike rack is demounted in the reverse order.

Note

For safety and environmental reasons (reducing fuel consumption), always remove the tailgate bike rack when it is not in use.

Mounting/demounting bikes

⚠ Caution

The tailgate bike rack is only suitable for the transport of bikes.
Never exceed the maximum allowable loading weight of the tailgate bike rack (see page 2) and the allowable total weight of your vehicle (see vehicle's owner manual).
Disregard of these limits could cause the rack together with the mounted bikes to detach from the vehicle and injure you or other persons and/or cause an accident.

⚠ Caution

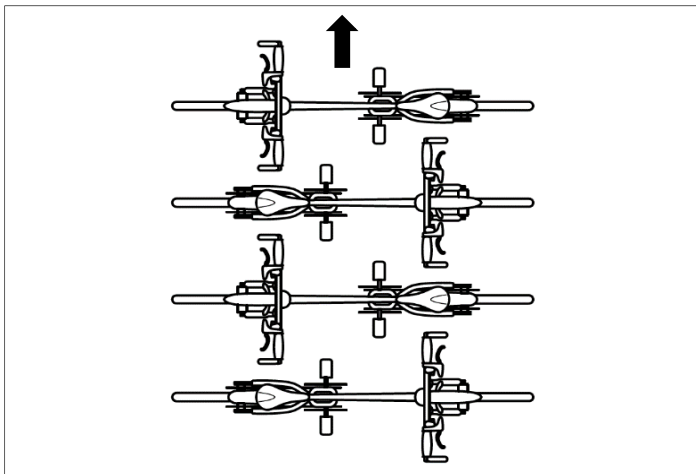
The bikes must be fixed onto the rack as uniformly as possible and with low centre of gravity. Each bike must be secured against falling off using one holder on the bike frame and ratchet straps on the front and rear wheels.
Before mounting the bikes, remove child seats and all loose parts, for example, panniers, drinking bottles, saddlebags, etc.

⚠ Caution

When loading the rack with the first bike ensure that the pedals do not collide with the rear windscreen or rear windscreen wipers of your vehicle. Turn the pedals up so that there is no longer a risk of contact (including when the rear windscreen wiper is in use).

If, in rare cases, contact occurs between the bike and rear windscreen wiper, use suitable measures (e.g. dismantle the rear windscreen wiper or the bike pedal) to ensure that damage cannot occur during use of the rack.

Arrangement of the bikes

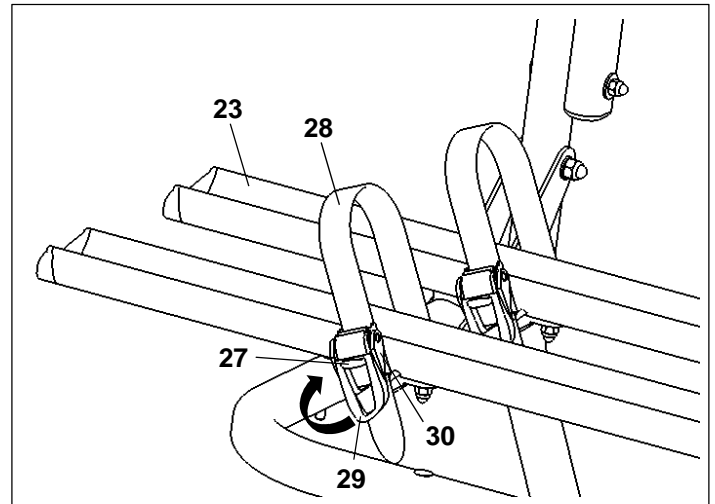


Note the arrangement of the bikes in the travel direction (arrow), as shown here.

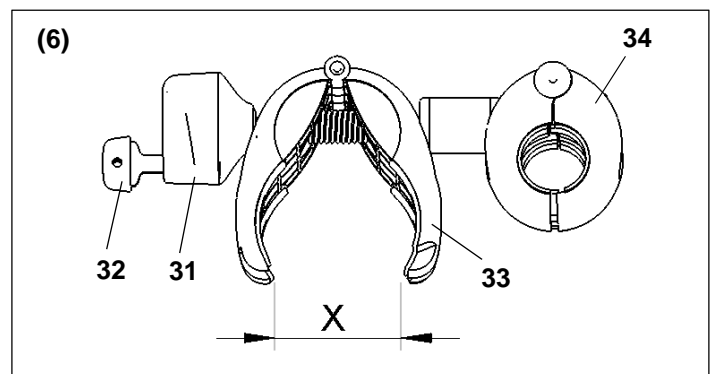
Note

Mount heavy bikes near to the vehicle and lighter bikers (e.g. children's bikes) further back on the bike rack. Mount the first bike with the sprocket directed towards the vehicle.

Mounting the first bike



1. Press the release bar (27) and pull out the ratchet straps (28).
2. Position a bike on the first (nearest the vehicle) bike rail (23) and secure against tilting.



3. If necessary use key (32) to unlock rotary handle (31) and use the rotary handle to screw open the clamp (33) until it is approx. a hand's width open (X).
4. Push together the clamp (33), hold and position the holder (6) with clamp (34) in a suitable position on the rack (4) and let go.

⚠ Caution

The clamps (33) and (34) must securely enclose the bike and rack frame. There must be no components clamped between the clamps and frame, e.g. gearshift or brake cables. Defective clamps must be replaced immediately.

5. Position the holder (6) with clamp (33) on the bike frame and use the rotary handle (31) to screw tight the clamp (33).

6. Lock the holder (6) with the key (32) and remove the key.
7. Feed the ratchet straps (28) in the middle between two wheel spokes, thread into the ratchet (30) and pull until hand-tight.
8. Use the tensioner handle (29) to tighten the ratchet straps (28).

Caution

Do not over-tighten the ratchet straps (28), as otherwise the ratchet straps and/or the tyres/wheel rims could become damaged.
Tightening the ratchet straps tensions them.
To release this tension the release bar (27) must be pressed, if necessary press hard.

Note

With the selected arrangement of the ratchet straps (28), on lashing the straps, both wheels are pulled at an angle to the bike rail (towards the middle of the vehicle). This ensures that the bike is also properly fixed to prevent sideward movements.
Do not change this position.

Note

The threaded screws of the holders (6), (7) and (8) must be cleaned at regular intervals and lubricated to prevent the twist handles from becoming stuck and immovable.

Mounting the second bike

The second bike is mounted in the same way as the first one. Note the arrangement of the two bikes in opposite directions.

The second bike is fixed in position using the long holder (7).

Mounting the third and fourth bike ¹⁾

The third and fourth bikes are mounted in the same way as the first. Note the opposite (back to back) arrangement of all bikes.

The third bike is fixed onto the bike frame of the second bike using the holder (8); the fourth bike is fixed onto the bike frame of the third.

Demounting the bikes

The bikes are demounted and the holders (6), (7) and (8) are undone in the reverse order.

1) only for Order No. 30364

Preparing for a trip

Caution

Each time after mounting the rack, before each trip and during a lengthy journey, all threaded fasteners and fixings of the tailgate bike rack and the bikes must be checked for secure fit and if necessary retightened. Damaged or worn parts of the tailgate bike rack must be replaced immediately.
Failure to do so could cause the tailgate bike rack together with the mounted bikes to detach from the vehicle and injure you or other persons and/or cause an accident.
The check must be repeated at regular intervals, depending on the road surface quality.

For journeys with unloaded tailgate bike rack, ensure that:

- the hinged rack shelf (1) is folded up and fixed onto the rack frame (4) or rather the rack side rail (2) and (3) by two ratchet straps (28).
- all holders (6), (7) and (8) must be removed from the rack and stowed away safely in the boot.
- the ratchet straps (28) of all bike rails (23) are closed.

General safety instructions

The vehicle driver is responsible for ensuring that their sight and hearing are not impaired by the loading and condition of the vehicle. They must ensure that the vehicle and the loading comply with the regulations and that loading does not affect the vehicle's roadworthiness.

Comply with the respective legal regulations for the use of bike racks in the country of use.

Caution

The mounting steps and safety instructions in these mounting and operating instructions must be complied with at all times.
The tailgate bike rack must be used exclusively for transporting bikes and is not suitable for off-road use.
Each time after mounting the rack, before each trip and during a lengthy journey, all threaded fasteners and fixings of the tailgate bike rack and the bikes must be checked for secure fit and if necessary retightened.
The check must be repeated at regular intervals, depending on the road surface quality.

Caution

During the journey the driver should use their rear-view mirror to check the rack and bikes for possible movement/displacement.

In case of changes, drive to the next safe stopping place with reduced speed and retighten the threaded fasteners and fixings of the bike rack and bikes. Failure to do so could cause the tailgate bike rack and/or the load to detach from the vehicle and injure you and other persons or cause an accident.

Caution

The load must not protrude by more than 40 cm beyond the outer edge of the light emitting surfaces of the side marker or rear position lamps of your vehicle. When transporting bikes, wheels protruding at the side must be identified by extra means.

Poorly visible objects must not protrude at the side. When driving at night, cover the reflectors of the bike wheels to avoid obstructing or misleading other road users.

The licensing plate and lighting of your vehicle must not be concealed by the rack and load.

Two wing mirrors (driver and passenger side) are required.

Failure to comply could cause an accident.

Caution

Do not use lubricant on the preassembled threaded fasteners. This could cause threaded fasteners to loosen and the rack together with the mounted bikes to detach from the vehicle and injure you and other persons or cause an accident.

Caution

Remove the tailgate bike rack before using a carwash. The bike rack, the vehicle and/or the car wash could become damaged otherwise.

Caution

Mounting the tailgate bike rack and the bikes changes the vehicle's handling and braking response as well as its crosswind susceptibility. Do not exceed the maximum speed of 130 km/h.

Do not cover the bikes with tarpaulins, protective covers, or similar, as this severely affects the windage area and vehicle handling.

Push heavy loads in the boot towards the front as far as possible, to prevent excessive tail-heaviness.

Always adapt your driving to the road, traffic and weather conditions and drive especially carefully with a loaded tailgate bike rack.

Failure to do so could cause the tailgate bike rack and/or the load to detach from the vehicle and injure you and other persons or cause an accident.

Caution

On vehicle models whose type approval was not issued until after 01.10.1998, the attached tailgate rack system or load carried must not conceal the vehicle's third brake light. The third brake light of the vehicle must be visible:

- on the right and left relative to the vehicle's lengthwise axis – at a horizontal angle of 10°
- upwards relative to the top of the light – at a vertical angle of 10°
- downwards relative to the bottom edge of the lights – at a vertical angle of 5°

If these values are not complied with a "third" substitute brake light must be attached.

Failure to comply could cause an accident.

Note

Clean the rack at regular intervals and check all components for damage or wear. Damaged or worn parts of the tailgate bike rack must be replaced immediately.

For safety reasons, we recommend renewing rubber inlays, masking films and ratchet straps every 3 years. Despite using high-quality materials, natural environmental effects can reduce the loading capacity of the ratchet straps.